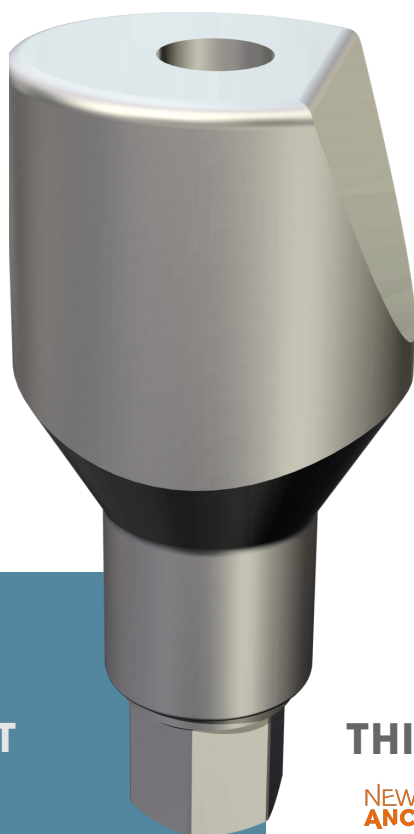


SCAN ABUTMENT ADVANCED

THE SOLUTION THAT CONQUERS STUDIO AND LABORATORY



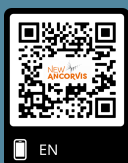
IN THIS
PAMPHLET

CHARACTERISTICS

ADVANTAGES

VERSIONS AVAILABLE

**IN-HOUSE PRODUCTION
PASSEPARTOUT
SERVICE**



EN

THIS IS WHAT YOU CAN DO WITH US



think about yourself!

Made of **gr5 Titanium** and available for over **300 implant connections**, here is our AQ scanbody line!

The tapered shape optimises positioning in the oral cavity.

The opaque-grey surface allows for easy scanning both in the intra-oral field (Studio scanner) and in the extra-oral field (Laboratory scanner).

In both conditions, it is not necessary to opacify the surface of the locator, to the benefit of the acquisition accuracy. The lateral laser marking allows for the correct implant connection to be easily identified.

The output diameter of the tightening screw channel is particularly reduced in order to ensure two advantages:

a. Increased surface available on the scanning plane;
Tightening screw locked inside the scan abutment body.



AQ SCAN ABUTMENT

YOUR PASSEPARTOUT

The New Ancorvis AQ scan abutment line also offers a **Small version** for reduced diameters (3 - 3.5) to allow for tight interproximal spaces to be easily managed. Moreover, AQ scan abutments can **also be used for In-Lab productions**, thanks to the new libraries opened by New Ancorvis.

And **what if your clinician's scan body is not an original New Ancorvis one?**

No problem! We are able to make it communicate with our world and to provide you with the right mathematics to allow you to produce all of your structures with us.

Thanks to a system specially created by our R&D staff, **we are indeed able to convert most of the locators available on the market and make them compatible with the New Ancorvis world.**

